

THE ARTISAN

 **PREMIER**[®]
UNIFORMS THAT WORK FOR YOU

COLLECTION VOLUME 9



**THE RECIPE FOR
A SUCCESSFUL
UNIFORM**

APRONS
A spectrum of shades

SHIRTS & TEE'S
Classic cuts to modern fits

CHEFSWEAR
Durable, functional & professional

OUTERWEAR
Stay sharp in all seasons



IN-HOUSE BAKERY

BRANDING YOUR BUSINESS

Welcome to The Artisan Magazine, where we've gathered our favourite uniforms and branding ideas to inspire the perfect look for your team.

We make choosing uniforms easy - with powerful imagery, clever branding, beautiful colours and seamless styling.

From guiding your colour choices to showing the impact of thoughtful branding, we're here to help you create a look that speaks volumes about your business.

Our uniforms are worn by thousands of people every year — from those who simply need an apron to protect their own clothing, to those who want a full head-to-toe look. By investing in a few key styles, businesses can create a strong brand identity, achieve a professional appearance, and make their team feel valued.

And because we are a business just like any other, we understand the challenges when it comes to doing better for the environment, so many of our styles are made from preferred materials such as organic cotton and recycled polyester. Just one of the ways we are helping businesses achieve their own sustainability goals.

For that all-important branding — whether it's a simple logo or a bold artistic statement — speak to your local supplier. They can offer print and embroidery solutions to help your business stand out from the crowd.



CONTENTS



STYLE IS *served*

EL MEXICANO



OUTFIT 1 & 2: PR190 & PR191 'Swap & Pop' Customisable Apron & Straps, page 28, styled with PR219 & PR319 'Comis' Cotton-Rich Tee, page 30.



BAR



OUTFIT 3: PR150 'Colours Collection' Bib Apron, page 27, styled with PR318 Women's 'Long-John' Roll-Sleeve Tee, page 30.

OUTFIT 4: PR125 Jean Stitch Denim Waist Apron, page 15, styled with PR318 Women's 'Long-John' Roll-Sleeve Tee, page 30.

OUTFIT 5: PR126 Jean Stitch Denim Bib Apron, page 15, styled with PR252 Men's 'Maxton' Check Long Sleeve Shirt, page 31.

BISTRO



OUTFIT 5: PR121 'Barley' Contrast Stitch Bib Apron, page 8, styled with PR319 Women's 'Comis' Cotton-Rich Tee, page 30 & PR352 Women's 'Maxton' Check Long Sleeve Shirt, page 31.

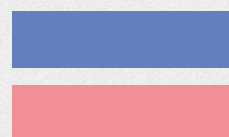
SPANISH CUISINE

PREMIER BISTRO
BAR AND TAPAS

COFFEE SHOP ☕



MORNING • NOON • NIGHT
coffee break
PREMIUM COFFEE ROASTERS



OUTFIT 7 & 8: PR130 Calibre' Heavy Cotton Canvas Bib Apron, page 24, styled with PR219 & PR319 'Comis' Cotton-Rich Tee, page 30.



ETHICAL, SOCIAL AND ENVIRONMENTAL CREDENTIALS

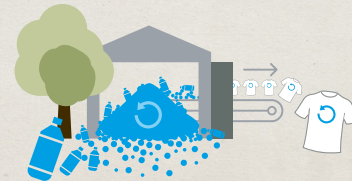
SUSTAINABILITY JOURNEY

BETTER PACKAGING



Since 2021 we have reduced single unit plastic packaging and increased the amount of recycled content within the remaining units.

REUSING PLASTICS



The recycled polyester in our garments comes from pre- and post-consumer materials. We also use post-consumer recycled nylon.

RESPONSIBLE COTTON SOURCING



Where we can, we source cotton that has been grown with more care for the environment.

COMMUNITY ENGAGEMENT



In partnership with the Jaago Foundation, we sponsor a class of 40 children at the Jaago School Banani Branch in Bangladesh.

SOCIAL COMPLIANCE



The people who make our garments work in factories that are audited to internationally recognised ethical standards which allows us to have transparency on our supply chain.



We are proud members

We partner with Better Cotton to improve cotton farming globally. Better Cotton's mission is to help cotton communities survive and thrive, while protecting and restoring the environment.



We support producers

The FAIRTRADE Cotton Mark means that all of the cotton in the garment is Fairtrade certified, traded, audited and sourced from Fairtrade producers. We are supporting Fairtrade farmers by purchasing their cotton.



We are certified

Styles that contain at least 95% organically grown material are certified to the Organic Content Standard 100. Styles that contain between 5-94% organically grown material are certified to the Organic Content Standard Blended.



We are certified

Styles that contain at least 50% recycled material are certified to the Global Recycled Standard. Styles that contain between 5 - 94% recycled material are certified to the Recycled Claim Standard Blended.



We are certified

Selected styles are certified to the Global Organic Textile Standard.



STANDARD 100

Product safety

Styles that display the OEKO-TEX® STANDARD 100 logo have been tested to provide the confidence that each product has been made to a high standard of product safety.

STYLED WITH
PR319 Women's 'Comis'
Cotton-Rich Tee, pg. 30



'REGENERATE' APRON

PR122 'Regenerate' Bib Apron

Black Denim: 53% Recycled Cotton, 41% Recycled Polyester, 6% Recycled Viscose, 275gsm

Indigo Denim: 58% Recycled Cotton, 36% Recycled Polyester, 6% Recycled Viscose, 275gsm

Grey Denim: 55% Recycled Cotton, 36% Recycled Polyester, 9% Recycled Viscose, 275gsm

Natural: 44% Recycled Cotton, 37% Recycled Polyester, 19% Recycled Viscose, 275gsm

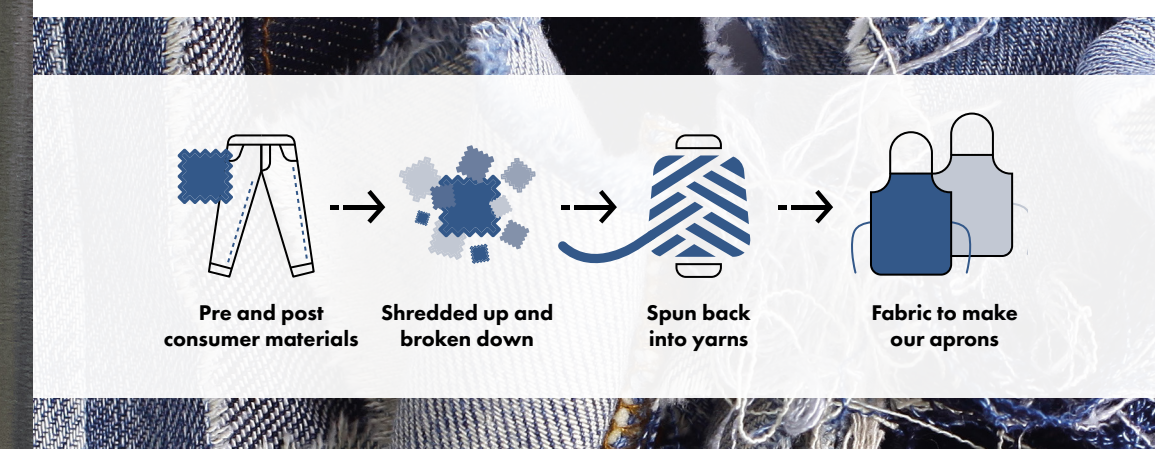
Cotton Rich

Brandable

60° Wash



WOVEN ON HAND LOOMS



100% RECYCLED & CERTIFIED





ARTISAN STYLES

Our artisan aprons are something special — crafted with care, designed to inspire, and made to last. Featuring intricate details and beautiful fabrics, this collection was made for creators who care about their craft.



‘BARLEY’ CONTRAST STITCH

PR121 ‘Barley’ Contrast Stitch Bib Apron
65% Recycled Polyester, 35% Cotton, 195gsm

60° Wash Brandable



■ Contrast stitching

■ Eyelet and rivet details

STYLED WITH
PR222 Men’s Jean Stitch
Denim Shirt, pg. 31
PR319 Women’s ‘Comis’
Cotton-Rich Tee, pg. 30
PR560/PR570 Performance
‘Chino’ Jeans, pg. 37

NEW



‘CLIP & CLASP’ CROSS-BACK

PR182 ‘Clip & Clasp’ Cross-Back Bib Apron
60% Cotton, 40% Recycled Polyester, 310gsm

60° Wash Brandable



ORGANIC COTTON

PR102 Organic Cotton Bib Apron
100% Organic Cotton, 240gsm

85° Wash Brandable



PR102

20
COLOURS

STYLED WITH
PR219 Men's 'Comis' Cotton-Rich Tee, pg. 30
PR560 Men's Performance Chino Jeans, pg. 37



CANVAS APRON

PR181 'Artisan's Choice' Double Pocket Canvas Apron
60% Cotton, 40% Recycled Polyester, 310gsm

60° Wash Brandable

STYLED WITH
PR319 Women's 'Comis' Cotton-Rich Tee, pg. 30
PR570 Women's Performance Chino Jeans, pg. 37



- Can be worn as a waist apron
- Rounded edges create soft lines





PR114

PR112

FAIRTRADE APRONS

PR112 & PR114 Cotton Bib & Waist Apron,
Organic & Fairtrade Certified
100% Cotton - Fairtrade Certified, 200gsm

40° Wash 100% Cotton Brandable



DENIM COTTON BIB APRON

PR113 Denim Cotton Bib Apron - Organic &
Fairtrade Certified
100% Cotton, Organic & Fairtrade Certified, 235gsm

Brandable 40° Wash 100% Cotton



Brown Denim Indigo Denim Black Denim

STYLED WITH
PR358 Banded Collar
'Grandad' Long Sleeve
Shirt, pg. 32

PR113



HEAVYWEIGHT BIB APRON

PR120 Recycled Polyester and Cotton Bib Apron,
Organic & Fairtrade Certified
65% Recycled Polyester, 35% Cotton,
Organic & Fairtrade Certified, 280gsm

60° Wash Brandable



PR120



Black Dark Grey Navy Red White





▪ Adjustable buckle



▪ Contrast pocket with rivet detail



PR127

STYLED WITH
PR258/PR358 Banded Collar
'Grandad' Long Sleeve Shirt, pg. 32



PR128

'DOMAIN' CONTRAST DENIM

PR127 & PR128 'Domain' Contrast Denim
Bib & Waist Apron

70% Cotton, 30% Polyester, 265gsm

85° Wash Cotton Rich Brandable



JEAN STITCH DENIM APRON

PR125 & PR126 Jean Stitch Denim Bib & Waist Apron

70% Cotton, 30% Polyester, 265gsm

85° Wash

Cotton Rich

Brandable



STYLED WITH
PR202/PR302 Short Sleeve
Poplin Shirt, pg. 33



Indigo
Denim

Black
Denim



COLOUR CRUSH

BURGUNDY

Deep, dramatic and undeniably stylish - Burgundy is the shade we can't get enough of this year. We've worked it into some classic colour pairings using White, Navy, Khaki and Olive to show how versatile this sumptuous shade can be.

1 **2**

WHITE

OUTFIT 1 & 2: PR150 'Colours Collection' Bib Apron, page 27, styled with PR218 & PR318 'Long-John' Roll-Sleeve Tee, page 30 and PR560 & PR570 Performance 'Chino' Jeans, page 36.

3

NAVY

OUTFIT 3: PR804 'Women's 'Artisan' Fleece Gilet, page 35, styled with PR352 Women's 'Maxton' Check Long Sleeve Shirt, page 31 and PR570 Performance 'Chino' Jeans, page 36.

4

OLIVE

OUTFIT 4: PR190 & PR191 'Swap & Pop' Customisable Apron & Straps, page 28 styled with PR218 Men's 'Comis' Cotton-Rich Tee, page 30 and PR560 Performance 'Chino' Jeans, page 36.

5 **6**

KHAKI

OUTFIT 5 & 6: PR137 'Calibre' Heavy Cotton Canvas Pocket Bib Apron, page 24, styled with PR200 & PR300 Long Sleeve Poplin Shirts, page 33 and PR560 & PR570 Performance 'Chino' Jeans, page 36.

'WAXED-LOOK'

DENIM APRONS

PR134 'District' Waxed-Look Bib Apron

PR135 'Division' Waxed-Look Waist Apron

PR136 'Division' Waxed-Look Bib Apron with Faux Leather
100% Cotton Denim with Acrylic 'Waxed Look' coating, 350gsm

40" Wash

100% Cotton

Brandable

PR134

PR136



PR135

STYLED WITH

PR218/PR318 'Long-John' Roll-Sleeve Tee, pg. 30

PR219 Men's 'Comis' Cotton-Rich Tee, pg. 30

STYLED WITH
PR218 Men's 'Long-John'
Roll-Sleeve Tee, pg. 30
PR560 Men's
Performance 'Chino'
Jeans, pg. 37

HOUSE BAK



▪ Faux leather cloth holder



▪ Faux leather neckband and buckle

ANNEX

BIB APRON

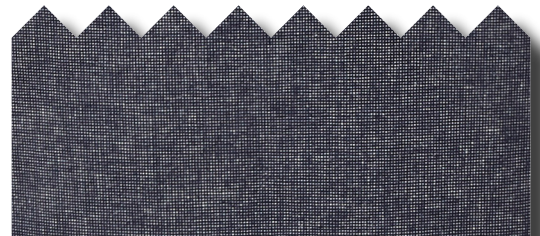
PR144 'Annex' Oxford Bib Apron
100% Cotton, 220gsm

60° Wash 100% Cotton Brandable



Black Navy Moss Burgundy Mustard

Yarn Dyed Oxford Weave



STYLED WITH
PR352 Women's 'Maxton'
Check Long Sleeve Shirt,
pg. 31

PR123



▪ Faux leather and eyelet



▪ 90cm self fabric ties



'ESPRESSO'

BIB APRON

PR123 'Espresso' Bib Apron
65% Polyester, 35% Cotton, 195gsm

60° Wash Easy Care Brandable



Black/Black Black/Brown Navy/Brown Khaki/Brown



PR154



PR182



PR121



PR150



PR129



PR123

APRONS FOR ALL

From hospitality and retail, to makers, florists, and gardeners, aprons are the go-to uniform piece for style, protection, and professionalism. Versatile, practical, and designed to suit every role, aprons really are for all.



MODELS WEARING
PR250/PR350 'Mulligan' Check Long Sleeve Shirt, pg. 31
PR144 'Annex' Oxford Bib Apron, pg. 20

STYLED WITH
PR219/PR319 'Comis'
Cotton-Rich Tee, pg. 30



'CALIBRE' COTTON CANVAS APRONS

PR130 'Calibre' Heavy Cotton Canvas Bib Apron

PR137 'Calibre' Heavy Cotton Canvas Pocket Bib Apron

100% Cotton Canvas, 350gsm

85° Wash 100% Cotton Brandable



CROSS BACK 'BARISTA' BIB APRON

PR129 Cross-Back 'Barista' Bib Apron

Canvas: 100% Cotton, 320gsm.

Denims: 70% Cotton, 30% Polyester, 265gsm



85° Wash Brandable



STYLED WITH
PR219/PR319 'Comis'
Cotton-Rich Tee, pg. 30

PR560/PR570 Performance
'Chino' Jeans, pg. 37

'CHINO' BIB APRON

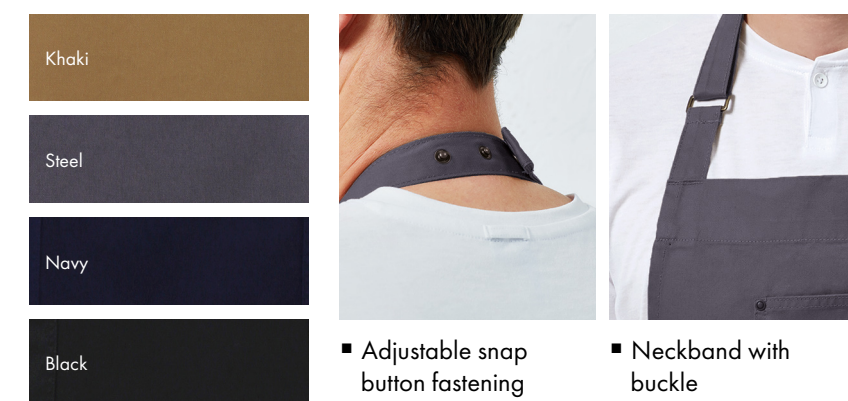
85° Wash

100% Cotton

Brandable

PR132 'Chino' Bib Apron

100% Cotton, 235gsm



Adjustable snap
button fastening

Neckband with
buckle

'METRO' UTILITY HIP APRON

100% Cotton†

Brandable

85° Wash

PR138 'Metro' Utility Hip Apron

Canvas: 100% Cotton, 320gsm.

Denims: 70% Cotton, 30% Polyester, 265gsm





COLOUR THAT MAKES AN IMPACT

THE ‘COLOURS COLLECTION’

The look we’ve created here uses Royal Blue as the central colour to bring the team together. You can choose from any of our 62 colours and create a similar aesthetic by mixing between bib and waist aprons, then complementing with tees and shirts.

The right colour choice can make your brand memorable, create the desired atmosphere and unify your team’s appearance. It has the power to inspire confidence, soothe nerves and can energise your staff and customers alike.

From calming blues to vibrant reds, each colour tells its own story. Used strategically, colour is one of the most powerful tools for defining your brand’s character and setting the tone for every interaction.

We offer the entire colour spectrum with our aprons, so go ahead — indulge and have fun creating staff uniforms that tell your unique story.

62 COLOURS

PR150, PR151, PR154, PR155, PR158

Colours: 65% Polyester, 35% Cotton 195gsm
Denims: 70% Cotton, 30% Polyester 265gsm
**PR150 Black and White available in extra large size*

85° Wash

Brandable



6 COLOURS

PR141



24 COLOURS

PR155

PR141 ‘Colours Collection’ Mid-Length Apron with Pocket

Colours: 65% Recycled Polyester, 35% Cotton, 195gsm
Denims: 70% Cotton, 30% Recycled Polyester, 265gsm



STYLED WITH
PR219/PR319 ‘Comis’ Cotton-Rich Tee, pg. 30
PR300 Women’s Long Sleeve Poplin Shirt, pg. 33
PR560/PR570 Performance ‘Chino’ Jeans, pg. 37

Raspberry Crush	Marine Blue
Magenta	Purple
Hot Pink	Rich Violet
Salsa	Lavender
Fuchsia	Lilac
Pink	Light Blue
Rose	Cornflower
Aubergine	Mid Blue
Burgundy	Sapphire
Red	Blue Denim
Strawberry Red	Indigo Denim
Orange	Navy
Tangerine	Royal
Chestnut	Peacock
Mocha	Teal
Brown	Turquoise
Dark Grey	Cyan
Mushroom	Duck Egg
Latte	Aqua
Khaki	Pistachio
Natural	Apple
Camel	Kelly
Mustard	Emerald
Sunflower	Bottle
Yellow	*White
Lemon	Silver
Lime	Steel
Oasis Green	Grey Denim
Olive	Black Denim
Moss Green	Charcoal
Sage	*Black

Black

Dark Grey

Purple

Navy

Royal

Turquoise

Sage

Khaki

Brown

Olive

Bottle

Emerald

Lime

Mustard

Orange

Red

Burgundy

Hot Pink

Pink

White

SWAP & POP

CUSTOMISABLE APRON & STRAPS

PR190 & PR191
65% Recycled Polyester, 35% Cotton, 195gsm



PR190 'Swap & Pop' Customisable Apron Body
PR191 'Swap & Pop' Customisable Apron Straps
(PR190 Apron body and PR191 Straps are sold separately)



▪ Pop-on waist ties



▪ Pop-on neckband with adjustable buckle

STYLED WITH
PR219/PR319 'Comis'
Cotton-Rich Tee, pg. 30



SHIRTS & TEES

‘LONG-JOHN’ ROLL-SLEEVE TEE

PR218 Men’s ‘Long-John’ Roll-Sleeve Tee, Sizes: S/30” – 3XL/54”
PR318 Women’s ‘Long-John’ Roll-Sleeve Tee, Sizes: XS/8 – 2XL/18



82% Polyester, 14% Viscose, 4% Elastane, 190gsm

- 40° Wash
- Modern Fit
- Easy Care
- Brandable

‘COMIS’ COTTON RICH TEE

PR219 Men’s ‘Comis’ Cotton-Rich Tee, Sizes: S/34” – 3XL/54”
PR319 Women’s ‘Comis’ Cotton-Rich Tee, Sizes: XS/8 – 2XL/18



Cotton rich for softness, with recycled polyester for durability

60% Cotton, 40% Recycled Polyester, 160gsm
Grey Marl: 90% Cotton, 10% Viscose, 160gsm

† Grey Marl does not contain recycled polyester
* Only Grey Marl is OEKO TEX® certified

- 60° Wash
- Cotton Rich
- Brandable



JEAN STITCH DENIM SHIRTS

PR222 Men’s Jean Stitch Denim Shirt
Sizes: S/34” – 3XL/54”

PR322 Women’s Jean Stitch Denim Shirt
Sizes: XS/8 – 3XL/20



- 100% Cotton
- 40° Wash
- Brandable
- Modern Fit



PR322

PR222



PR350

PR250

‘MULLIGAN’ CHECK SHIRTS

PR250 Men’s ‘Mulligan’ Check Long Sleeve Shirt
Sizes: S/34” – 3XL/54”

PR350 Women’s ‘Mulligan’ Check Long Sleeve Shirt
Sizes: XS/8 – 2XL/18

- 40° Wash
- Easy Care
- Modern Fit
- Brandable



‘MAXTON’ CHECK LONG SLEEVE SHIRTS

PR252 Men’s ‘Maxton’ Check Long Sleeve Shirt
Sizes: S/34” – 3XL/54”

PR352 Women’s ‘Maxton’ Check Long Sleeve Shirt
Sizes: XS/8 – 2XL/18

- 40° Wash
- Easy Care
- Modern Fit
- Brandable



31

30

STYLED WITH
PR560/PR570
Performance 'Chino'
Jeans, pg. 37

NEW

PR203

PR303

RECYCLIGHT
POPLIN SHIRTS

PR203 Men's 'Recyclight' Poplin Shirt
Sizes: S/34" – 5XL/62"

PR303 Women's 'Recyclight' Poplin Shirt
Sizes: XS/8 – 4XL/22

Black

White

Brandable

Easy Care

Modern Fit

40° Wash

RECYCLED
POLYESTER

Global Recycled
Standard

RECYCLIGHT™

'GRANDAD' SHIRTS

PR258 Men's Banded Collar 'Grandad' Shirt
Sizes: XS/30" - 3XL/54"

PR358 Women's Banded Collar 'Grandad' Shirt
Sizes: XS/8 - 2XL/18

32

PR258

PR358

Brandable

40° Wash

Modern Fit

OEKO
TEX®

STANDARD
100
11-55731
Shirley

PREMIER®
UNIFORMS THAT WORK FOR YOU

OEKO
TEX®

STANDARD
100
11-55731
Shirley

Brandable

Tailored Fit

Easy Care

40° Wash

PR200

PR302

POPLIN SHIRTS

LONG
SLEEVE

PR200 Men's Long Sleeve
Poplin Shirt
Sizes: 14.5"/37cm - 23"/56cm*

PR300 Women's Long Sleeve
Poplin Shirt
Sizes: 2XS/6 - 8XL/30*

SHORT
SLEEVE

PR202 Men's Short Sleeve
Poplin Shirt
Sizes: 14.5"/37cm - 23"/56cm*

PR302 Women's Short Sleeve
Poplin Shirt
Sizes: 2XS/6 - 8XL/30*

*Men's sizes 20"/50cm, 21"/52cm, 22"/54cm and 23"/56cm only available in selected colours

*Women's sizes 28/7XL and 30/8XL only available in selected colours

Navy*

Royal*

Turquoise*

Light Blue*

Mid Blue*

Purple*

Burgundy*

Red*

Hot Pink

Pink

Khaki

Dark Grey*

Silver*

White*

Steel*

Bottle

Black*

33

'ARTISAN'

FLEECE GILETS & JACKETS



PR803 Men's 'Artisan' Fleece Gilet
Sizes: S/34" - 3XL/54"

PR804 Women's 'Artisan' Fleece Gilet
Sizes: XS/8 - 3XL/20



PR823 Men's 'Artisan' Fleece Jacket
Sizes: S/34" - 3XL/54"

PR824 Women's 'Artisan' Fleece Jacket
Sizes: XS/8 - 3XL/20



Brandable 40° Wash



STYLED WITH
PR560/PR570 Performance
'Chino' Jeans, pg. 37



HERRINGBONE

WAISTCOATS

PR625 Men's Herringbone Waistcoat
Sizes: XS/32" - 2XL/52"

PR626 Women's Herringbone Waistcoat
Sizes: XS/8 - 2XL/18

30° Wash

Brandable





PR562

PR572

CHINO

JEANS & SHORTS



PR562 Men's Performance 'Chino' Shorts

Sizes: XS/30" – 4XL/44"

PR572 Women's Performance 'Chino' Shorts

Sizes: XS/8 – 5XL/24

Brandable

60° Wash

STRETCH



BRACES

PR701 Clip-On Trouser Braces

One size



PR560 Men's Performance 'Chino' Jeans

Sizes: XS/30" – 4XL/44", Regular & Long leg.

PR570 Women's Performance 'Chino' Jeans

Sizes: XS/8 – 5XL/24, Regular & Long leg.

Brandable

60° Wash

STRETCH



PR560

PR570



CHEFSWEAR

WITH RECYCLED STYLES

CHEF'S RECYCLED SHORT SLEEVE SHIRT

PR904 Chef's 'Recyclight' Short Sleeve Shirt
65% Recycled Polyester, 35% Cotton, 170gsm
XS/30" – 3XL/50"

60° Wash Brandable



Contrast inner collar



Double pen pocket



COOLCHECKER® CHEF'S SHIRTS

NEW

PR646 Short Sleeve 'Essential' Chef's Shirt

PR647 Long Sleeve 'Essential' Chef's Shirt

Sizes: XS/31" – 4XL/48"

60° Wash

Brandable

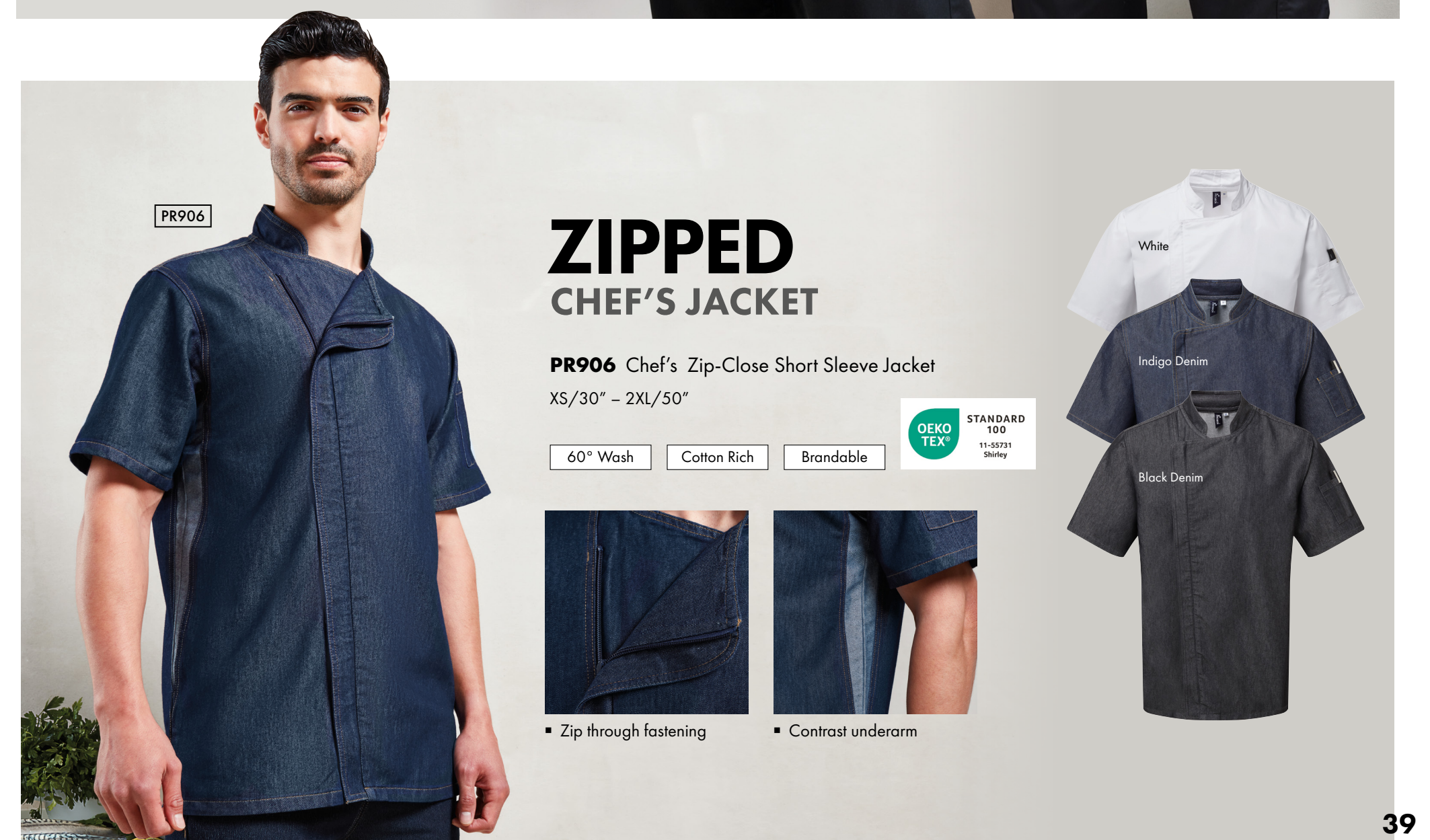


Loop to secure apron



Pen pocket

COOL
CHECKER



PR906

ZIPPED CHEF'S JACKET

PR906 Chef's Zip-Close Short Sleeve Jacket

XS/30" – 2XL/50"

60° Wash

Cotton Rich

Brandable



Zip through fastening



Contrast underarm





COOLCHECKER®

CHEF'S JACKETS



▪ Double pen pocket



▪ Breathable mesh back panel

PR902 Coolchecker® Short Sleeve Jacket

PR903 Coolchecker® Long Sleeve Jacket

Sizes: XS/30" – 2XL/50"



60° Wash

Brandable



PRESS STUD

FASTENING JACKETS

PR664 Short Sleeve Studded Chef's Jacket

PR665 Long Sleeve Studded Chef's Jacket

S/30" – 5XL/62"

PR660 Long Sleeve Denim Studded Chef's Jacket

S/30" – 3XL/54"

85° Wash

Brandable



PR656 Short Sleeve Chef's Jacket
PR657 Long Sleeve Chef's Jacket
XS/30" – 5XL/62"

OEKO TEX[®] STANDARD 100 11-55731 Shirley
85° Wash
Brandable



CLASSIC CHEF'S JACKETS

PR657

PR656

ESSENTIAL CHEF'S JACKETS

PR900 'Essential' Short Sleeve Chef's Jacket
PR901 'Essential' Long Sleeve Chef's Jacket
XS/30" – 5XL/62"

OEKO TEX[®] STANDARD 100 11-55731 Shirley
85° Wash
Brandable



PR901

PR900

CHEF'S TROUSERS

COMFORT IN THE KITCHEN



PR556

PR556 Chef's 'Artisan' Jogger Bottoms

Sizes: XS/28" – 2XL/44"

40° Wash
Cotton Rich
Brandable

OEKO TEX[®] STANDARD 100 11-55731 Shirley



PR555

PR555 'Essential' Chef's Cargo Pocket Trousers

Sizes: XS/28" – 5XL/46"

60° Wash
Easy Care
Brandable

OEKO TEX[®] STANDARD 100 11-55731 Shirley



■ Two cargo pockets



PR554

PR554 Chef's 'Select' Slim Leg Trousers

Sizes: XS/28" – 2XL/44"

85° Wash
Brandable

OEKO TEX[®] STANDARD 100 11-55731 Shirley



PR557

PR557 Chef's 'Recyclight' Cargo Trousers

Sizes: S/32-24" – 3XL/44-46"

60° Wash
Brandable

Global Recycled Standard



■ Single cargo pockets

CHEF'S STYLE



OUTFIT 1: PR903 Coolchecker® Long Sleeve Jacket, page 40, styled with PR182 'Clip & Clasp' Cross-Back Bib Apron, page 9.



OUTFIT 2: PR904 Chef's 'Recyclight' Short Sleeve Shirt, page 38, styled with PR129 Cross-Back 'Barista' Bib Apron, page 25.



OUTFIT 3: PR646 Short Sleeve 'Essential' Chef's Shirt page 42, styled with PR144 'Annex' Oxford Bib Apron, page 20.



NEW

PR910 Chef's Anti-Slip 'Anchor' Clog
Sizes: 3-4/36-37 – 10-11/44-45

Anti-Slip



APRONS

A spectrum of shades

SHIRTS & TEE'S

Classic cuts to modern fits

CHEFSWEAR

Durable, functional & professional

OUTERWEAR

Stay sharp in all seasons

